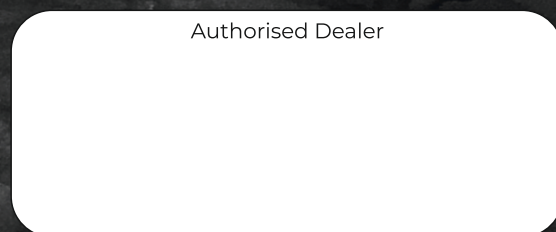




IN YOUR SERVICE  
FOR LAST  
**59 YEARS**



Mfg. in RAJKOT (Guj)  
[www.dharaflourmill.com](http://www.dharaflourmill.com)



sakshigraphics  
9429502003

\* All the products Displayed in Catalog for the presentation Purpose Only. Original Products may vary.

Apne Desh Ki **No. 1**  
Atta Chakki

सोचो सौ बार...  
खरीदो एक बार...



**S.S. PULVERISER**  
**MACHINE 2 IN 1**



# COMPANY PROFILE



In today's hi-tech era, healthy family is an essential key to a well planned success.

**DHARA** is a leading brand in domestic flour mills, market in India **since 1965**.

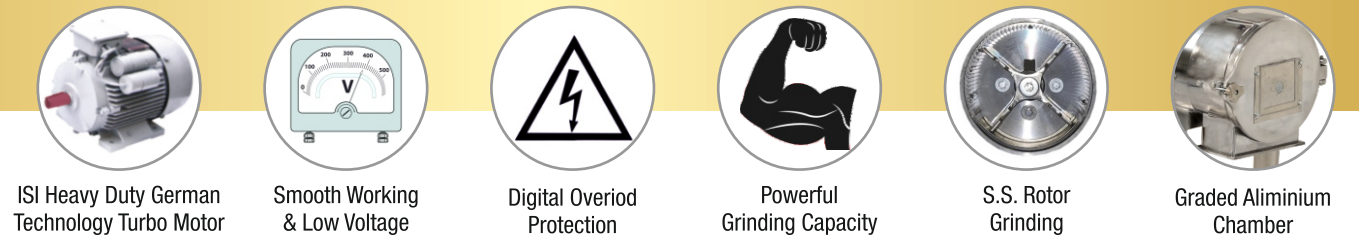
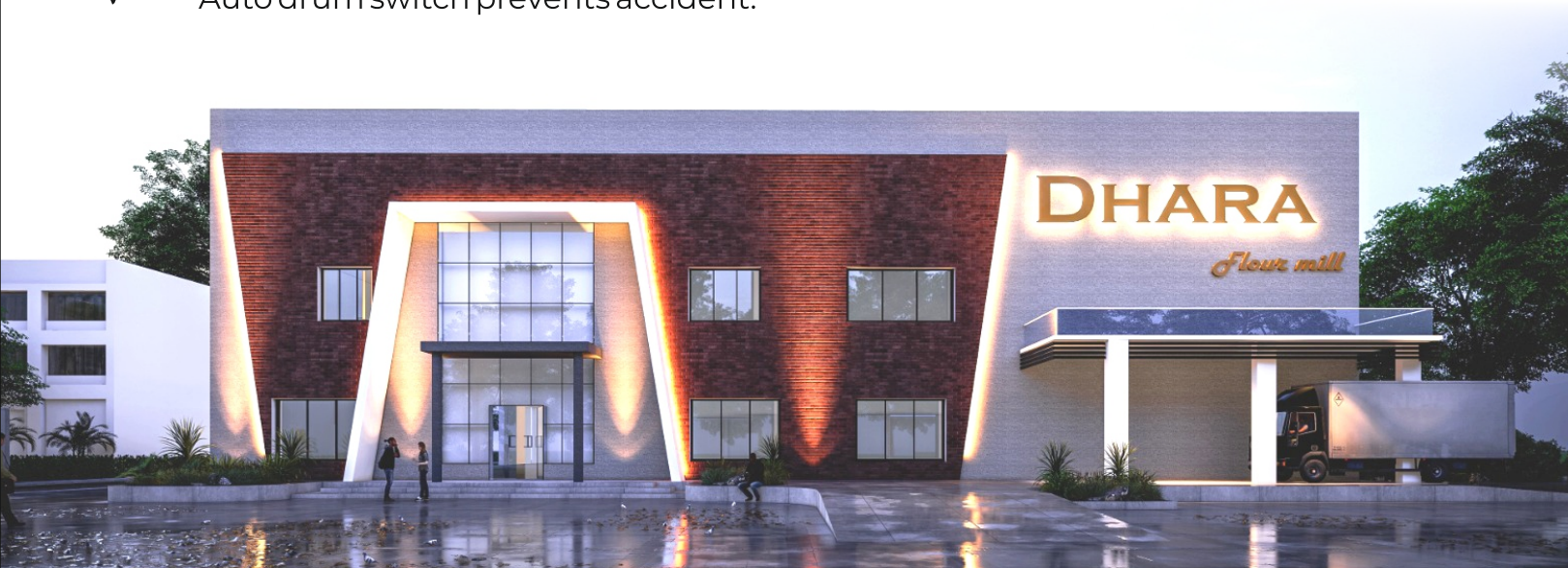
**DHARA** is the most essential home appliance for your entire families health. According to experts, the proteins and vitamins contents of any grain is destroyed by friction created between two stone of traditional flour mill.

**DHARA** uses state of the art **stoneless technology** to make flour from grains without crushing grains. Grains are collided with each other and surface of the mill and converted in to flour. hence, it preserves the vitamins and nutrition.

Also, according to IS specification 1155 grounded flour remains semi warm which in turn lead to **germ free** flour. Hence, **DHARA** is the **best choice for healthy family**.

## Salient Features:

- ✓ Flour contains no sand/stone particle because the unit is stoneless.
- ✓ Auto clean system to ensure easiest cleaning.
- ✓ In addition to grains and pulses; spices and sugar, Undried grain during monsoon can also be grinded.
- ✓ Protein and vitamin content remain intact.
- ✓ makes very less sound. Consumes less electricity.
- ✓ Contains no belt, pulley and jack or gear - hence no maintenance required.
- ✓ Auto drum switch prevents accident.



**2 H.P. (2 IN 1)**



**3 H.P. (2 IN 1)**



**5/7.5 H.P. (2 IN 1)**

## S.S. PULVERISER

### Salient Features

- At your service for 50+ years in the field.
- Electronic Robot for Motor protection.
- No Stone, V-belt or gear & hence it's repairing free.
- No trouble of cleanliness & hence save time.
- Protect grains nutritious element.
- Fine Milling.
- Big size hoper and extra Big size masala hopper.
- Easy to operate, move, clean, and no foundation



Model	Electric Motor In (HP)	Grinding Capacity	Weight in Kg
S.S. Super Power	2.0	18 to 25 kg	50-55
S.S. Mega Power	3.0	25 to 35 kg	60-65
S.S. Five Power	5.0	35 to 50 kg	70-75
S.S. Turbo Power	7.5	50 to 70 kg	80-85

\*Grinding capacity at standard voltage supply and subject to type of grains