



**SIG-11**

**SIG-12**

**SIG-13**

**SIG-14**

## GRINDING CAPACITY (per hour approx)

Wheat	6 to 8 Kg.	Corn	6 to 8 Kg.	Green Gram	6 to 8 Kg.
Pearl Millet	6 to 8 Kg.	Pulse	6 to 8 Kg.	Suji	6 to 8 Kg.
Rice	6 to 8 Kg.	Black Pepper	8 to 10 Kg.	Coffee	8 to 10 Kg.

Model	Dimention (inch)	Electric Data
DHARA SIGNATURE FULLY AUTO	Height - 33 Length - 19 Width - 14	1 H.P. Single phase Motor 220/230 V 50 Hz, 2880 R.P.M. 0.75 Unit/hr (Approx) 100% Copper Winding

सोचो सौ बार...  
खरीदो एक बार...



Mfg. in RAJKOT (Guj)  
www.dharafLOURMILL.com

India's No. 1  
Quality Product

Authorised Dealer

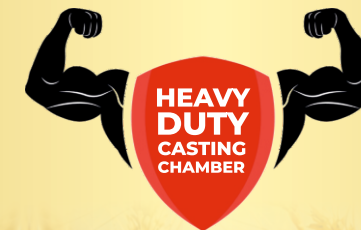


sakshigraphics  
9429502003

Apne Desh Ki **No. 1**  
Atta Chakki



**SUPER STRONG PLYWOOD BODY**



प्राचीन परंपरा का  
आधुनिक नाम धारा...



# COMPANY PROFILE



In today's hi-tech era, healthy family is an essential key to a well planned success. **DHARA** is a leading brand in domestic flour mills, market in India **since 1965**. **DHARA** is the most essential home appliance for your entire families health. According to experts, the proteins and vitamins contents of any grain is destroyed by friction created between two stone of traditional flour mill. **DHARA** uses state of the art **stoneless technology** to make flour from grains without crushing grains. Grains are collided with each other and surface of the mill and converted in to flour. hence, it preserves the vitamins and nutrition.

Also, according to IS specification 1155 grounded flour remains semi warm which in turn lead to **germ free** flour. Hence, **DHARA** is the **best choice for healthy family**.

## Salient Features:

- ✓ Flour contains no sand/stone particle because the unit is stoneless.
- ✓ Auto clean system to ensure easiest cleaning.
- ✓ In addition to grains and pulses; spices and sugar, Undried grain during monsoon can also be grinded.
- ✓ Protein and vitamin content remain intact.
- ✓ makes very less sound. Consumes less electricity.
- ✓ Contains no belt, pulley and jack or gear - hence no maintenance required.
- ✓ Auto drum switch prevents accident.



**SIG-01**



**SIG-02**

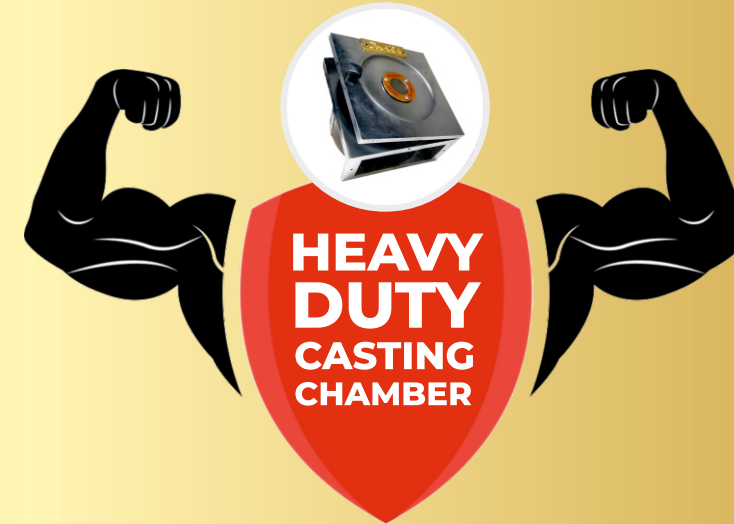


**SIG-03**

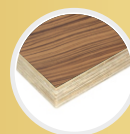


**SIG-04**

## SIGNATURE SERIES



Safety Lock



Ply-Laminated Cabinet For Long Life



Heavy Duty German Technology Turbo Motor



Digital Auto Control System



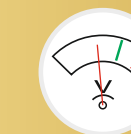
Caster Wheels



LED Glow System



Electric Overload Protection



Smooth Worring In Low Voltage



**SIG-05**



**SIG-06**



**SIG-07**



**SIG-08**



**SIG-09**



**SIG-10**



**KEEP YOUR FAMILY HEALTHY WITH DHARA FLOUR MILL**